

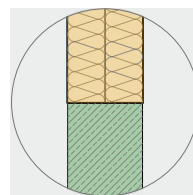
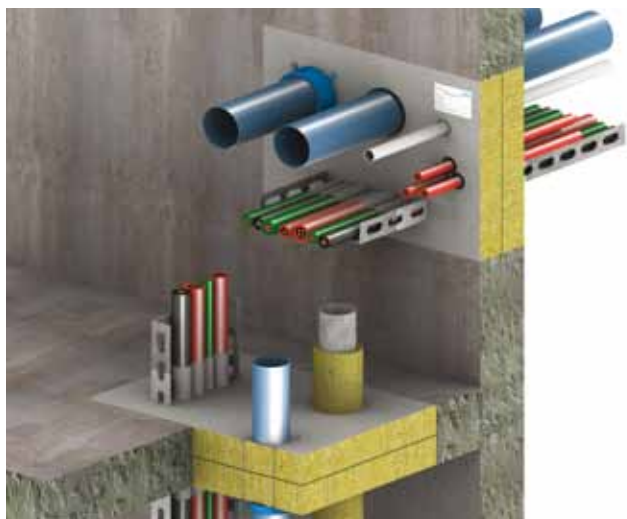
Promat

# Übersicht PROMASTOP®-CC

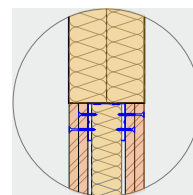
Baulicher Brandschutz

RICHTIG.SICHER.

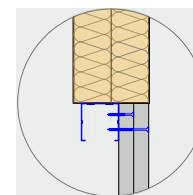




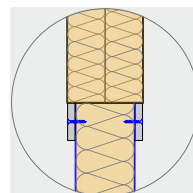
**MBW**  
Massivwand  
≥ 100 mm



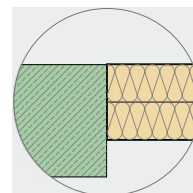
**LBW**  
Leichte Trennwand  
≥ 100 mm



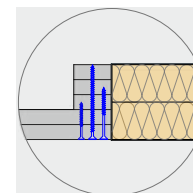
**Schachtwand**  
≥ 2 x 20 mm



**Sandwichpaneel**  
1: Pflaum ≥ 80mm  
2: Bruchza ≥ 80mm



**MD**  
Massivdecke  
≥ 150 mm



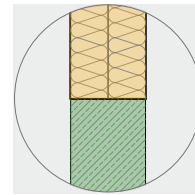
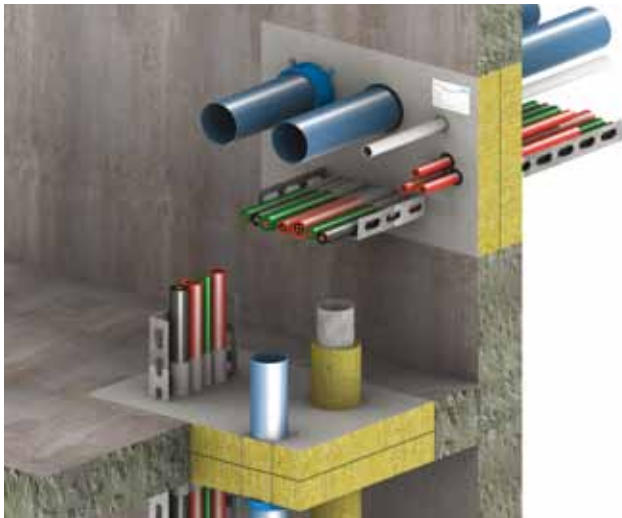
**LBD**  
Abgehängte Decke  
≥ 2 x 20 mm

Einbausituation Ein-Plattenschott PROMASTOP®-CC 1 x 50 mm	MBW	LBW	Schachtwand	Sandwich 1	Sandwich 2	MD	LBD
Feuerwiderstand Leerabschottung	EI60	EI60	---	---	---	EI60	---
Maximale Abschottungsgrösse	3,00m <sup>2</sup>	3,00m <sup>2</sup>	---	---	---	3,00m <sup>2</sup>	---
<b>Kabel mit PROMASTOP®-CC → Komibschott, Seite 5, Pos. 3</b>							
KG1: alle ummantelten Kabel Ø ≤ 21 mm	EI60	EI60	---	---	---	EI90	---
KG2: alle ummantelten Kabeltypen 21 ≤ Ø ≤ 50 mm	EI60	EI60	---	---	---	EI60	---
KG3: alle ummantelten Kabeltypen 50 ≤ Ø ≤ 80 mm	EI60	EI60	---	---	---	EI60	---
KG4: Kabelbündel aus Leitungen der KG1 Ø ≤ 100 mm	EI60	EI60	---	---	---	EI90	---
KG5: alle nicht ummantelten Kabel Ø ≤ 24 mm	EI45	EI45	---	---	---	EI60	---
KG6: Leerrohr/Rohr St, Cu, Kunststoff, U/C, Ø ≤ 16 mm	EI45	EI45	---	---	---	EI45	---
<b>Kabel mit PROMASTOP®-IM CJ21 → Komibschott, Seite 9, Pos. 5</b>							
KG1: alle ummantelten Kabel Ø ≤ 21 mm	EI60	EI60	---	---	---	EI60	---
<b>Nichtbrennbare Rohre, nichtbrennbarer Dämmung mit PROMASTOP®-CC → Komibschott, Seite 6 - 8, Pos. 4</b>							
Stahlrohre Ø ≤ 114 mm, s ≤ 14,2 mm	EI60	EI60	---	---	---	EI60	---
Stahlrohre Ø ≤ 220 mm, s ≤ 14,2 mm	---	---	---	---	---	---	---
Kupferrohre Ø ≤ 88,9 mm, s ≤ 14,2 mm	EI60	EI60	---	---	---	EI60	---
<b>Nichtbrennbare Rohre mit brennbarer Dämmung mit PROMASTOP®-W → Komibschott, Seite 22, Pos. 9</b>							
Stahlrohre Ø15 mm, s 9,0 mm - Ø108 mm, s 32,0 mm,	L1	---	---	---	---	---	---
Kupferrohre Ø15 mm, s 9,0 mm - Ø88,9 mm, s 32,0 mm,	L1	---	---	---	---	---	---
<b>Kunststoffrohre (brennbar) ohne Dämmung mit PROMASTOP®-FC → Komibschott, Seite 10 - 15, Pos. 6</b>							
PE-HD, ABS, SAN, PVC Rohre Ø32, s 1,8 - Ø125, s 7,4,	FC3	EI60	EI60	---	---	---	EI60
PE-HD, ABS, SAN, PVC Rohre Ø50, s 1,8 - Ø200, s 11,4,	FC6	EI60	EI60	---	---	---	EI60
PP-H, PP-R Rohre Ø32, s 1,8 - Ø160, s 4,0,	FC3	EI60	EI60	---	---	---	EI60
PP-H, PP-R Rohre Ø50, s 1,8 - Ø200, s 11,4,	FC6	EI60	EI60	---	---	---	EI60
PVC-U, PVC-C Rohre Ø32, s 1,8 - Ø125, s 7,1,	FC3	EI60	EI60	---	---	---	EI60
PVC-U, PVC-C Rohre Ø50, s 1,8 - Ø250, s 4,9,	FC6	EI60	EI60	---	---	---	EI60
Poloplast POLOKAL NG Rohre Ø32, s 1,8 - Ø160, s 4,9,	FC3	EI60	EI60	---	---	---	EI60
Poloplast POLOKAL NG Rohre Ø50, s 2,0 - Ø250, s 8,6,	FC6	EI60	EI60	---	---	---	EI60
Poloplast POLOKAL XS Rohre Ø32, s 1,8 - Ø110, s 3,4,	FC3	EI60	EI60	---	---	---	EI60
Poloplast POLOKAL XS Rohre Ø50, s 2,0 - Ø110, s 3,4,	FC6	EI60	EI60	---	---	---	EI60
Poloplast POLOKAL 3S Rohre Ø75, s 3,8 - Ø160, s 7,5,	FC3	EI60	EI60	---	---	---	EI60
Poloplast POLOKAL 3S Rohre Ø75, s 3,8 - Ø160, s 7,5,	FC6	EI60	EI60	---	---	---	EI60
Poloplast POLO ECO plus Premium 10 Ø110, s 3,9 - Ø250, s 8,5,	FC6	---	---	---	---	---	---
Poloplast POLO ECO plus Prem. 10 Ø315, s 10,8 - Ø400, s 13,6,	FC15	---	---	---	---	---	---
Pipeliflife Master 3 Rohre Ø32, s 1,8 - Ø125, s 3,5,	FC3	EI60	EI60	---	---	---	EI60
Pipeliflife Master 3 Rohre Ø50, s 1,8 - Ø160, s 4,4,	FC6	EI60	EI60	---	---	---	EI60
Geberit Silent dB20 Rohre Ø56, s 3,2 - Ø110, s 6,0,	FC3	EI60	EI60	---	---	---	EI60
Geberit Silent dB20 Rohre Ø56, s 3,2 - Ø160, s 7,0,	FC6	EI60	EI60	---	---	---	EI60
Geberit Silent PP Rohre Ø32, s 2,0 - Ø125, s 4,2,	FC3	EI60	EI60	---	---	---	EI60
Geberit Silent PP Rohre Ø32, s 2,0 - Ø160, s 5,2,	FC6	EI60	EI60	---	---	---	EI60
Rehau Baupiano plus Rohre Ø40, s 1,8 - Ø200, s 6,2,	FC6	EI60	EI60	---	---	---	EI60
Nicoll dBlue plus Rohre Ø50, s 1,8 - Ø125, s 3,9,	FC3	EI60	EI60	---	---	---	EI60
Girpi Friaphon Rohre Ø52, s 2,8 - Ø110, s 5,3,	FC3	EI60	EI60	---	---	---	EI60
Girpi Friaphon Rohre Ø52, s 2,8 - Ø160, s 6,3,	FC3	EI60	EI60	---	---	---	EI60
Girpi HTA-E Rohre Ø40, s 3,0 - Ø125, s 6,0,	FC6	EI60	EI60	---	---	---	EI60
KeKelit Phonex AS Rohre Ø58, s 4,0 - Ø160, s 5,3,	FC6	EI60	EI60	---	---	---	EI60
Wavin AS Rohre Ø58, s 4,0 - Ø160, s 5,3,	FC6	EI60	EI60	---	---	---	EI60
Wavin SiTech+ Rohre Ø50, s 1,8 - Ø160, s 4,9,	FC3	EI60	EI60	---	---	---	EI60
Marley Silent Rohre Ø75, s 2,0 - Ø110, s 3,0,	FC6	EI60	EI60	---	---	---	EI60

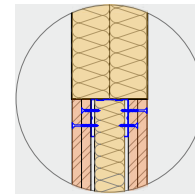
Fortsetzung:

Einbausituation Ein-Plattenschott PROMASTOP®-CC 1 x 50 mm	MBW	LBW	Schachtwand	Sandwich 1	Sandwich 2	MD	LBD
<b>Kunststoffrohre (brennbar) ohne Dämmung mit PROMASTOP®-W → Komibschott, Seite 16 - 17, Pos. 7</b>							
PE-HD, ABS, SAN, PVC Rohre Ø32/2,0 - Ø160/14,6, Ø 32 - 63 L1	---	---	---	---	---	---	---
PE-HD, ABS, SAN, PVC Rohre Ø32/2,0 - Ø160/14,6, Ø 64 - 110 L2	---	---	---	---	---	---	---
PE-HD, ABS, SAN, PVC Rohre Ø32/2,0 - Ø160/14,6, Ø 111 - 125 L3	---	---	---	---	---	---	---
PE-HD, ABS, SAN, PVC Rohre Ø32/2,0 - Ø160/14,6, Ø 126 - 160 L4	---	---	---	---	---	---	---
PP-H, PP-R Rohre Ø20/2,8 - Ø160/14,6, Ø 20 - 63 L1	---	---	---	---	---	---	---
PP-H, PP-R Rohre Ø20/2,8 - Ø160/14,6, Ø 64 - 110 L2	---	---	---	---	---	---	---
PP-H, PP-R Rohre Ø20/2,8 - Ø160/14,6, Ø 111 - 125 L3	---	---	---	---	---	---	---
PP-H, PP-R Rohre Ø20/2,8 - Ø160/14,6, Ø 126 - 160 L4	---	---	---	---	---	---	---
PP-H, PP-R Rohre Ø32/1,8 - Ø160/14,6, Ø 20 - 63 L1	---	---	---	---	---	---	---
PP-H, PP-R Rohre Ø32/1,8 - Ø160/14,6, Ø 64 - 110 L2	---	---	---	---	---	---	---
PP-H, PP-R Rohre Ø32/1,8 - Ø160/14,6, Ø 111 - 125 L3	---	---	---	---	---	---	---
PP-H, PP-R Rohre Ø32/1,8 - Ø160/14,6, Ø 126 - 160 L4	---	---	---	---	---	---	---
PVC-U, PVC-C Rohre Ø32/2,0 - Ø160/14,6, Ø 32 - 63 L1	---	---	---	---	---	---	---
PVC-U, PVC-C Rohre Ø32/2,0 - Ø160/14,6, Ø 75 - 110 L2	---	---	---	---	---	---	---
PVC-U, PVC-C Rohre Ø32/2,0 - Ø160/14,6, Ø 111 - 125 L3	---	---	---	---	---	---	---
PVC-U, PVC-C Rohre Ø32/2,0 - Ø160/14,6, Ø 140 - 160 L4	---	---	---	---	---	---	---
Poloplast POLOKAL NG Rohre Ø32/1,8 - Ø160/4,9, Ø 32 - 63 L3	---	---	---	---	---	---	---
Poloplast POLOKAL NG Rohre Ø32/1,8 - Ø160/4,9, Ø 75 - 90 L4	---	---	---	---	---	---	---
Poloplast POLOKAL NG Rohre Ø32/1,8 - Ø125/3,9, Ø 110 - 125 L5	---	---	---	---	---	---	---
Poloplast POLOKAL NG Rohre Ø32/1,8 - Ø125/3,9, Ø 140 - 160 L6	---	---	---	---	---	---	---
Poloplast POLOKAL XS Rohre Ø32/1,8 - Ø160/4,9, Ø 32 - 63 L3	---	---	---	---	---	---	---
Poloplast POLOKAL XS Rohre Ø32/1,8 - Ø160/4,9, Ø 75 - 90 L4	---	---	---	---	---	---	---
Poloplast POLOKAL XS Rohre Ø32/1,8 - Ø160/4,9, Ø 110 - 125 L5	---	---	---	---	---	---	---
Poloplast POLOKAL XS Rohre Ø32/1,8 - Ø160/4,9, Ø 140 - 160 L6	---	---	---	---	---	---	---
Poloplast POLOKAL 3S Rohre Ø75/3,8 - Ø160/7,5, Ø 75 - 90 L4	---	---	---	---	---	---	---
Poloplast POLOKAL 3S Rohre Ø75/3,8 - Ø160/7,5, Ø 110 - 125 L5	---	---	---	---	---	---	---
Poloplast POLOKAL 3S Rohre Ø75/3,8 - Ø160/7,5, Ø 140 - 160 L6	---	---	---	---	---	---	---
Poloplast POLOKAL 3S Rohre Ø75/3,8 - Ø125/5,3, Ø 75 - 90 L4	---	---	---	---	---	---	---
Poloplast POLOKAL 3S Rohre Ø75/3,8 - Ø125/5,3, Ø 110 - 125 L5	---	---	---	---	---	---	---
Geberit Silent dB20 Rohre Ø56/3,2 - Ø160/7,0, Ø 16 - 63 L3	---	---	---	---	---	---	---
Geberit Silent dB20 Rohre Ø56/3,2 - Ø160/7,0, Ø 75 - 90 L4	---	---	---	---	---	---	---
Geberit Silent dB20 Rohre Ø56/3,2 - Ø160/7,0, Ø 110 - 125 L5	---	---	---	---	---	---	---
Geberit Silent dB20 Rohre Ø56/3,2 - Ø160/7,0, Ø 140 - 160 L6	---	---	---	---	---	---	---
Geberit Silent dB20 Rohre Ø56/3,2 - Ø110/6,0, Ø 16 - 63 L3	---	---	---	---	---	---	---
Geberit Silent dB20 Rohre Ø56/3,2 - Ø110/6,0, Ø 75 - 90 L4	---	---	---	---	---	---	---
Kelit KETRIX Rohre Ø20/2,8 - Ø160/14,6, Ø 20 - 63 L1	---	---	---	---	---	---	---
Kelit KETRIX Rohre Ø20/2,8 - Ø160/14,6, Ø 64 - 110 L2	---	---	---	---	---	---	---
Kelit KETRIX Rohre Ø20/2,8 - Ø160/14,6, Ø 111 - 125 L3	---	---	---	---	---	---	---
Kelit KETRIX Rohre Ø20/2,8 - Ø160/14,6, Ø 126 - 160 L4	---	---	---	---	---	---	---
PE-X Rohre Ø16/2,2 - Ø63/8,6, Ø 16 - 63 L1	---	---	---	---	---	---	---
<b>Kunststoffrohre (bb) mit brennbarer Dämmung mit PROMASTOP®-W → Komibschott, Seite 16 - 18, Pos. 7</b>							
PP-H, PP-R Rohre Ø20, d6 - Ø110 d32,0, RF2 cr, Ø 20 - 63 L1	---	---	---	---	---	---	---
PP-H, PP-R Rohre Ø20, d6 - Ø110 d32,0, RF2 cr, Ø 64 - 110 L2	---	---	---	---	---	---	---
PP-H, PP-R Rohre Ø20, d4 - Ø32 d13,0, RF3 cr, Ø 20 - 63 L1	---	---	---	---	---	---	---
Kelit KETRIX Rohre Ø20, d6,0 - Ø160, d32,0, RF2 cr, Ø 20 - 63 L1	---	---	---	---	---	---	---
Kelit KETRIX Rohre Ø20, d6,0 - Ø160, d32,0, RF2 cr, Ø 64 - 110 L2	---	---	---	---	---	---	---
Kelit KETRIX Rohre Ø20, d6,0 - Ø160, d32,0, RF2 cr, Ø 111 - 125 L3	---	---	---	---	---	---	---
Kelit KETRIX Rohre Ø20, d6,0 - Ø160, d32,0, RF2 cr, Ø 126 - 160 L4	---	---	---	---	---	---	---
PE-X Rohre Ø16, d6,0 - Ø63, d32,0, RF2 cr, Ø 16 - 63 L1	---	---	---	---	---	---	---
PE-X Rohre Ø16, d6,0 - Ø63, d32,0, RF3 cr, Ø 16 - 63 L1	---	---	---	---	---	---	---
<b>Alu-Verbundrohre mit brennbarer Dämmung mit PROMASTOP®-W → Komibschott, Seite 19 - 21, Pos. 8</b>							
Geberit MePla Rohre Ø16, d6,0 - Ø75 d32,0, RF2 cr, L1	---	---	---	---	---	---	---
Geberit MePla Rohre Ø16, d4,0 - Ø75 d13,0, RF3 cr, L1	---	---	---	---	---	---	---
Geberit PushFit Rohre Ø16, d6,0 - Ø25 d32,0, RF2 cr, L1	---	---	---	---	---	---	---
Pipelife Radopress Rohre Ø16, d6,0 - Ø63 d32,0, RF2 cr, L1	---	---	---	---	---	---	---
Pipelife Radopress Rohre Ø16, d4,0 - Ø32 d9,0, RF3 cr, L1	---	---	---	---	---	---	---
Rehau Rautitan stabil Rohre Ø16,2, d6,0 - Ø40 d32,0, RF2 cr, L1	---	---	---	---	---	---	---
Rehau Rautitan stabil Rohre Ø16,2, d4,0 - Ø25 d13,0, RF3 cr, L1	---	---	---	---	---	---	---
Viega Raxofix / Sanfix Rohre Ø16, d6,0 - Ø63 d32,0, RF2 cr, L1	---	---	---	---	---	---	---
Viega Raxofix / Sanfix Rohre Ø20, d6,0 - Ø65 d32,0, RF2 cr, L1	---	---	---	---	---	---	---
Viega Raxinox Rohre Ø16, d4,0 - Ø20 d25,0, RF3 cr, L1	---	---	---	---	---	---	---
Uponor MLC pipe Rohre Ø14, d6,0 - Ø75 d32,0, RF2 cr, L1	---	---	---	---	---	---	---
Uponor MLC pipe Rohre Ø16, d4,0 - Ø25 d13,0, RF3 cr, L1	---	---	---	---	---	---	---
Uponor UNI pipe Rohre Ø16, d6,0 - Ø32 d32,0, RF2 cr, L1	---	---	---	---	---	---	---
Uponor UNI pipe Rohre Ø16, d4,0 - Ø25 d10,0, RF3 cr, L1	---	---	---	---	---	---	---
Kelit KELOX Rohre Ø14, d6,0 - Ø75, d32,0, RF2 cr, L1	---	---	---	---	---	---	---
Kelit KELOX Rohre Ø14, d4,0 - Ø32, d13,0, RF3 cr, L1	---	---	---	---	---	---	---
Kelit HIT K06 Rohre Ø20, d6,0 - Ø63, d32,0, RF2 cr, L1	---	---	---	---	---	---	---
Kelit HIT K06 Rohre Ø63, d32,0 - Ø90, d32,0, RF2 cr, L2	---	---	---	---	---	---	---
Kelit HIT K06 Rohre Ø20, d6,0 - Ø90, d32,0, RF2 cr, L1	---	---	---	---	---	---	---
Kelit KETRIX Tri01 Rohre Ø20, d6,0 - Ø63, d32,0, RF2 cr, L1	---	---	---	---	---	---	---
Kelit KETRIX Tri01 Rohre Ø63, d32,0 - Ø90, d32,0, RF2 cr, L2	---	---	---	---	---	---	---
Kelit KETRIX Tri01 Rohre Ø20, d6,0 - Ø90, d32,0, RF2 cr, L1	---	---	---	---	---	---	---
<b>Stromschienen → Komibschott, Seite 23, Pos. 10</b>							
Canalis KTA 800A - 4000A mit PROMASTOP-CC	EI60	EI60	---	---	---	EI60	---

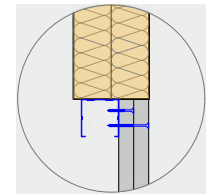




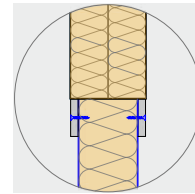
**MBW**  
Massivwand  
≥ 100 mm



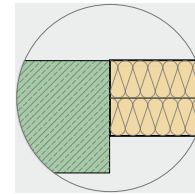
**LBW**  
Leichte Trennwand  
≥ 100 mm



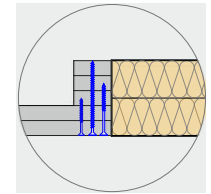
**Schachtwand**  
≥ 2 x 20 mm



**Sandwichpaneel**  
1: Pflaum ≥ 80mm  
2: Bruchta ≥ 80mm



**MD**  
Massivdecke  
≥ 150 mm

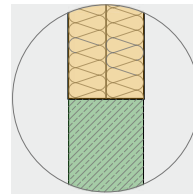
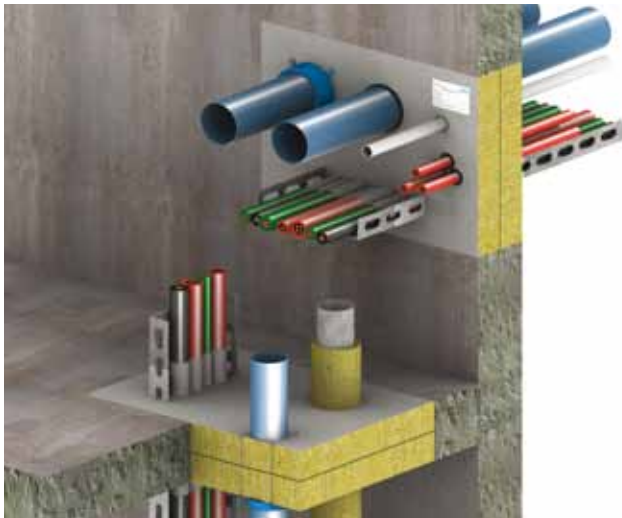


**LBD**  
Abgehängte Decke  
≥ 2 x 20 mm

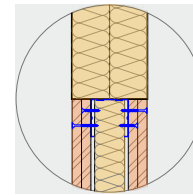
Einbausituation Ein-Plattenschott PROMASTOP®-CC 1 x 80 mm	MBW	LBW	Schachtwand	Sandwich 1	Sandwich 2	MD	LBD
Feuerwiderstand Leerabschottung	EI120	EI120	EI90	EI120	EI90	EI120	EI90
Maximale Abschottungsgrösse	3,00m <sup>2</sup>	3,00m <sup>2</sup>	0,60m <sup>2</sup>	2,60m <sup>2</sup>	0,16m <sup>2</sup>	3,00m <sup>2</sup>	0,72m <sup>2</sup>
<b>Kabel mit PROMASTOP®-CC → Komibschott, Seite 5, Pos. 3</b>							
KG1: alle ummantelten Kabel Ø ≤ 21 mm	EI90	EI90	EI90	EI90	EI90	EI90	EI90
KG2: alle ummantelten Kabeltypen 21 ≤ Ø ≤ 50 mm	EI60	EI60	EI60	EI60	EI60	EI90	EI90
KG3: alle ummantelten Kabeltypen 50 ≤ Ø ≤ 80 mm	EI60	EI60	EI60	EI60	EI60	EI90	EI90
KG4: Kabelbündel aus Leitungen der KG1 Ø ≤ 100 mm	EI90	EI90	EI90	EI90	EI90	EI90	EI90
KG5: alle nicht ummantelten Kabel Ø ≤ 24 mm	EI60	EI60	EI60	EI60	EI60	EI60	EI60
KG6: Leerrohr/Rohr St, Cu, Kunststoff, U/C, Ø ≤ 16 mm	EI60	EI60	EI60	EI60	EI60	EI60	EI60
<b>Kabel mit PROMASTOP®-IM CJ21 → Komibschott, Seite 9, Pos. 5</b>							
KG1: alle ummantelten Kabel Ø ≤ 21 mm	EI90	EI90	EI90	EI90	EI90	EI90	EI90
<b>Nichtbrennbare Rohre, nichtbrennbarer Dämmung mit PROMASTOP®-CC → Komibschott, Seite 6 - 8, Pos. 4</b>							
Stahlrohre Ø ≤ 114 mm, s ≤ 14,2 mm	EI90	EI90	EI90	EI90	EI90	EI90	EI90
Stahlrohre Ø ≤ 220 mm, s ≤ 14,2 mm	---	---	---	---	---	---	---
Kupferrohre Ø ≤ 88,9 mm, s ≤ 14,2 mm	EI90	EI90	EI90	EI90	EI90	EI90	EI90
<b>Nichtbrennbare Rohre mit brennbarer Dämmung mit PROMASTOP®-W → Komibschott, Seite 22, Pos. 9</b>							
Stahlrohre Ø15 mm, s 9,0 mm - Ø108 mm, s 32,0 mm, L1	---	---	---	---	---	---	---
Kupferrohre Ø15 mm, s 9,0 mm - Ø88,9 mm, s 32,0 mm, L1	---	---	---	---	---	---	---
<b>Kunststoffrohre (brennbar) ohne Dämmung mit PROMASTOP®-FC → Komibschott, Seite 10 - 15, Pos. 6</b>							
PE-HD, ABS, SAN, PVC Rohre Ø32, s 1,8 - Ø125, s 7,4, FC3	EI90	EI90	EI90	EI90	EI90	EI90	EI90
PE-HD, ABS, SAN, PVC Rohre Ø50, s 1,8 - Ø200, s 11,4, FC6	EI90	EI90	EI90	EI90	EI90	EI90	EI90
PP-H, PP-R Rohre Ø32, s 1,8 - Ø160, s 4,0, FC3	EI90	EI90	EI90	EI90	EI90	EI90	EI90
PP-H, PP-R Rohre Ø50, s 1,8 - Ø200, s 11,4, FC6	EI90	EI90	EI90	EI90	EI90	EI90	EI90
PVC-U, PVC-C Rohre Ø32, s 1,8 - Ø125, s 7,1, FC3	EI90	EI90	EI90	EI90	EI90	EI90	EI90
PVC-U, PVC-C Rohre Ø50, s 1,8 - Ø250, s 4,9, FC6	EI90	EI90	EI90	EI90	EI90	EI90	EI90
Poloplast POLOKAL NG Rohre Ø32, s 1,8 - Ø160, s 4,9, FC3	EI90	EI90	EI90	EI90	EI90	EI90	EI90
Poloplast POLOKAL NG Rohre Ø50, s 2,0 - Ø250, s 8,6, FC6	EI90	EI90	EI90	EI90	EI90	EI90	EI90
Poloplast POLOKAL XS Rohre Ø32, s 1,8 - Ø110, s 3,4, FC3	EI90	EI90	EI90	EI90	EI90	EI90	EI90
Poloplast POLOKAL XS Rohre Ø50, s 2,0 - Ø110, s 3,4, FC6	EI90	EI90	EI90	EI90	EI90	EI90	EI90
Poloplast POLOKAL 3S Rohre Ø75, s 3,8 - Ø160, s 7,5, FC3	EI90	EI90	EI90	EI90	EI90	EI90	EI90
Poloplast POLOKAL 3S Rohre Ø75, s 3,8 - Ø160, s 7,5, FC6	EI90	EI90	EI90	EI90	EI90	EI90	EI90
Poloplast POLO ECO plus Premium 10 Ø110, s 3,9 - Ø250, s 8,5, FC6	---	---	---	---	---	---	---
Poloplast POLO ECO plus Prem. 10 Ø315, s 10,8 - Ø400, s 13,6, FC15	---	---	---	---	---	---	---
Pipelife Master 3 Rohre Ø32, s 1,8 - Ø125, s 3,5, FC3	EI90	EI90	EI90	EI90	EI90	EI90	EI90
Pipelife Master 3 Rohre Ø50, s 1,8 - Ø160, s 4,4, FC6	EI90	EI90	EI90	EI90	EI90	EI90	EI90
Geberit Silent dB20 Rohre Ø56, s 3,2 - Ø110, s 6,0, FC3	EI90	EI90	EI90	EI90	EI90	EI90	EI90
Geberit Silent dB20 Rohre Ø56, s 3,2 - Ø160, s 7,0, FC6	EI90	EI90	EI90	EI90	EI90	EI90	EI90
Geberit Silent PP Rohre Ø32, s 2,0 - Ø125, s 4,2, FC3	EI90	EI90	EI90	EI90	EI90	EI90	EI90
Geberit Silent PP Rohre Ø32, s 2,0 - Ø160, s 5,2, FC6	EI90	EI90	EI90	EI90	EI90	EI90	EI90
Rehau Baupiano plus Rohre Ø40, s 1,8 - Ø200, s 6,2, FC6	EI90	EI90	EI90	EI90	EI90	EI90	EI90
Nicoll dBlue plus Rohre Ø50, s 1,8 - Ø125, s 3,9, FC3	EI90	EI90	EI90	EI90	EI90	EI90	EI90
Girpi Friaphon Rohre Ø52, s 2,8 - Ø110, s 5,3, FC3	EI90	EI90	EI90	EI90	EI90	EI90	EI90
Girpi Friaphon Rohre Ø52, s 2,8 - Ø160, s 6,3, FC3	EI90	EI90	EI90	EI90	EI90	EI90	EI90
Girpi HTA-E Rohre Ø40, s 3,0 - Ø125, s 6,0, FC6	EI90	EI90	EI90	EI90	EI90	EI90	EI90
KeKelit Phonex AS Rohre Ø58, s 4,0 - Ø160, s 5,3, FC6	EI90	EI90	EI90	EI90	EI90	EI90	EI90
Wavin AS Rohre Ø58, s 4,0 - Ø160, s 5,3, FC6	EI90	EI90	EI90	EI90	EI90	EI90	EI90
Wavin SiTech+ Rohre Ø50, s 1,8 - Ø160, s 4,9, FC3	EI90	EI90	EI90	EI90	EI90	EI90	EI90
Marley Silent Rohre Ø75, s 2,0 - Ø110, s 3,0, FC6	EI90	EI90	EI90	EI90	EI90	EI90	EI90

Fortsetzung:

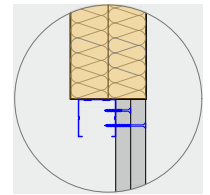
Einbausituation Ein-Plattenschott PROMASTOP®-CC 1 x 80 mm	MBW	LBW	Schachtwand	Sandwich 1	Sandwich 2	MD	LBD
<b>Kunststoffrohre (brennbar) ohne Dämmung mit PROMASTOP®-W → Komibschott, Seite 16 - 17, Pos. 7</b>							
PE-HD, ABS, SAN, PVC Rohre Ø32/2,0 - Ø160/14,6, Ø 32 - 63 L1	---	---	---	---	---	---	---
PE-HD, ABS, SAN, PVC Rohre Ø32/2,0 - Ø160/14,6, Ø 64 - 110 L2	---	---	---	---	---	---	---
PE-HD, ABS, SAN, PVC Rohre Ø32/2,0 - Ø160/14,6, Ø 111 - 125 L3	---	---	---	---	---	---	---
PE-HD, ABS, SAN, PVC Rohre Ø32/2,0 - Ø160/14,6, Ø 126 - 160 L4	---	---	---	---	---	---	---
PP-H, PP-R Rohre Ø20/2,8 - Ø160/14,6, Ø 20 - 63 L1	---	---	---	---	---	---	---
PP-H, PP-R Rohre Ø20/2,8 - Ø160/14,6, Ø 64 - 110 L2	---	---	---	---	---	---	---
PP-H, PP-R Rohre Ø20/2,8 - Ø160/14,6, Ø 111 - 125 L3	---	---	---	---	---	---	---
PP-H, PP-R Rohre Ø20/2,8 - Ø160/14,6, Ø 126 - 160 L4	---	---	---	---	---	---	---
PP-H, PP-R Rohre Ø32/1,8 - Ø160/14,6, Ø 20 - 63 L1	---	---	---	---	---	---	---
PP-H, PP-R Rohre Ø32/1,8 - Ø160/14,6, Ø 64 - 110 L2	---	---	---	---	---	---	---
PP-H, PP-R Rohre Ø32/1,8 - Ø160/14,6, Ø 111 - 125 L3	---	---	---	---	---	---	---
PP-H, PP-R Rohre Ø32/1,8 - Ø160/14,6, Ø 126 - 160 L4	---	---	---	---	---	---	---
PVC-U, PVC-C Rohre Ø32/2,0 - Ø160/14,6, Ø 32 - 63 L1	---	---	---	---	---	---	---
PVC-U, PVC-C Rohre Ø32/2,0 - Ø160/14,6, Ø 75 - 110 L2	---	---	---	---	---	---	---
PVC-U, PVC-C Rohre Ø32/2,0 - Ø160/14,6, Ø 111 - 125 L3	---	---	---	---	---	---	---
PVC-U, PVC-C Rohre Ø32/2,0 - Ø160/14,6, Ø 140 - 160 L4	---	---	---	---	---	---	---
Poloplast POLOKAL NG Rohre Ø32/1,8 - Ø160/4,9, Ø 32 - 63 L3	---	---	---	---	---	---	---
Poloplast POLOKAL NG Rohre Ø32/1,8 - Ø160/4,9, Ø 75 - 90 L4	---	---	---	---	---	---	---
Poloplast POLOKAL NG Rohre Ø32/1,8 - Ø125/3,9, Ø 110 - 125 L5	---	---	---	---	---	---	---
Poloplast POLOKAL NG Rohre Ø32/1,8 - Ø125/3,9, Ø 140 - 160 L6	---	---	---	---	---	---	---
Poloplast POLOKAL XS Rohre Ø32/1,8 - Ø160/4,9, Ø 32 - 63 L3	---	---	---	---	---	---	---
Poloplast POLOKAL XS Rohre Ø32/1,8 - Ø160/4,9, Ø 75 - 90 L4	---	---	---	---	---	---	---
Poloplast POLOKAL XS Rohre Ø32/1,8 - Ø160/4,9, Ø 110 - 125 L5	---	---	---	---	---	---	---
Poloplast POLOKAL XS Rohre Ø32/1,8 - Ø160/4,9, Ø 140 - 160 L6	---	---	---	---	---	---	---
Poloplast POLOKAL 3S Rohre Ø75/3,8 - Ø160/7,5, Ø 75 - 90 L4	---	---	---	---	---	---	---
Poloplast POLOKAL 3S Rohre Ø75/3,8 - Ø160/7,5, Ø 110 - 125 L5	---	---	---	---	---	---	---
Poloplast POLOKAL 3S Rohre Ø75/3,8 - Ø160/7,5, Ø 140 - 160 L6	---	---	---	---	---	---	---
Poloplast POLOKAL 3S Rohre Ø75/3,8 - Ø125/5,3, Ø 75 - 90 L4	---	---	---	---	---	---	---
Poloplast POLOKAL 3S Rohre Ø75/3,8 - Ø125/5,3, Ø 110 - 125 L5	---	---	---	---	---	---	---
Geberit Silent dB20 Rohre Ø56/3,2 - Ø160/7,0, Ø 16 - 63 L3	---	---	---	---	---	---	---
Geberit Silent dB20 Rohre Ø56/3,2 - Ø160/7,0, Ø 75 - 90 L4	---	---	---	---	---	---	---
Geberit Silent dB20 Rohre Ø56/3,2 - Ø160/7,0, Ø 110 - 125 L5	---	---	---	---	---	---	---
Geberit Silent dB20 Rohre Ø56/3,2 - Ø160/7,0, Ø 140 - 160 L6	---	---	---	---	---	---	---
Geberit Silent dB20 Rohre Ø56/3,2 - Ø110/6,0, Ø 16 - 63 L3	---	---	---	---	---	---	---
Geberit Silent dB20 Rohre Ø56/3,2 - Ø110/6,0, Ø 75 - 90 L4	---	---	---	---	---	---	---
Kelit KETRIX Rohre Ø20/2,8 - Ø160/14,6, Ø 20 - 63 L1	---	---	---	---	---	---	---
Kelit KETRIX Rohre Ø20/2,8 - Ø160/14,6, Ø 64 - 110 L2	---	---	---	---	---	---	---
Kelit KETRIX Rohre Ø20/2,8 - Ø160/14,6, Ø 111 - 125 L3	---	---	---	---	---	---	---
Kelit KETRIX Rohre Ø20/2,8 - Ø160/14,6, Ø 126 - 160 L4	---	---	---	---	---	---	---
PE-X Rohre Ø16/2,2 - Ø63/8,6, Ø 16 - 63 L1	---	---	---	---	---	---	---
<b>Kunststoffrohre (bb) mit brennbarer Dämmung mit PROMASTOP®-W → Komibschott, Seite 16 - 18, Pos. 7</b>							
PP-H, PP-R Rohre Ø20, d6 - Ø110 d32,0, RF2 cr, Ø 20 - 63 L1	---	---	---	---	---	---	---
PP-H, PP-R Rohre Ø20, d6 - Ø110 d32,0, RF2 cr, Ø 64 - 110 L2	---	---	---	---	---	---	---
PP-H, PP-R Rohre Ø20, d4 - Ø32 d13,0, RF3 cr, Ø 20 - 63 L1	---	---	---	---	---	---	---
Kelit KETRIX Rohre Ø20, d6,0 - Ø160, d32,0, RF2 cr, Ø 20 - 63 L1	---	---	---	---	---	---	---
Kelit KETRIX Rohre Ø20, d6,0 - Ø160, d32,0, RF2 cr, Ø 64 - 110 L2	---	---	---	---	---	---	---
Kelit KETRIX Rohre Ø20, d6,0 - Ø160, d32,0, RF2 cr, Ø 111 - 125 L3	---	---	---	---	---	---	---
Kelit KETRIX Rohre Ø20, d6,0 - Ø160, d32,0, RF2 cr, Ø 126 - 160 L4	---	---	---	---	---	---	---
PE-X Rohre Ø16, d6,0 - Ø63, d32,0, RF2 cr, Ø 16 - 63 L1	---	---	---	---	---	---	---
PE-X Rohre Ø16, d6,0 - Ø63, d32,0, RF3 cr, Ø 16 - 63 L1	---	---	---	---	---	---	---
<b>Alu-Verbundrohre mit brennbarer Dämmung mit PROMASTOP®-W → Komibschott, Seite 19 - 21, Pos. 8</b>							
Geberit MePla Rohre Ø16, d6,0 - Ø75 d32,0, RF2 cr, L1	---	---	---	---	---	---	---
Geberit MePla Rohre Ø16, d4,0 - Ø75 d13,0, RF3 cr, L1	---	---	---	---	---	---	---
Geberit PushFit Rohre Ø16, d6,0 - Ø25 d32,0, RF2 cr, L1	---	---	---	---	---	---	---
Pipelife Radopress Rohre Ø16, d6,0 - Ø63 d32,0, RF2 cr, L1	---	---	---	---	---	---	---
Pipelife Radopress Rohre Ø16, d4,0 - Ø32 d9,0, RF3 cr, L1	---	---	---	---	---	---	---
Rehau Rautitan stabil Rohre Ø16,2, d6,0 - Ø40 d32,0, RF2 cr, L1	---	---	---	---	---	---	---
Rehau Rautitan stabil Rohre Ø16,2, d4,0 - Ø25 d13,0, RF3 cr, L1	---	---	---	---	---	---	---
Viega Raxofix / Sanfix Rohre Ø16, d6,0 - Ø63 d32,0, RF2 cr, L1	---	---	---	---	---	---	---
Viega Raxofix / Sanfix Rohre Ø20, d6,0 - Ø65 d32,0, RF2 cr, L1	---	---	---	---	---	---	---
Viega Raxinox Rohre Ø16, d4,0 - Ø20 d25,0, RF3 cr, L1	---	---	---	---	---	---	---
Uponor MLC pipe Rohre Ø14, d6,0 - Ø75 d32,0, RF2 cr, L1	---	---	---	---	---	---	---
Uponor MLC pipe Rohre Ø16, d4,0 - Ø25 d13,0, RF3 cr, L1	---	---	---	---	---	---	---
Uponor UNI pipe Rohre Ø16, d6,0 - Ø32 d32,0, RF2 cr, L1	---	---	---	---	---	---	---
Uponor UNI pipe Rohre Ø16, d4,0 - Ø25 d10,0, RF3 cr, L1	---	---	---	---	---	---	---
Kelit KELOX Rohre Ø14, d6,0 - Ø75, d32,0, RF2 cr, L1	---	---	---	---	---	---	---
Kelit KELOX Rohre Ø14, d4,0 - Ø32, d13,0, RF3 cr, L1	---	---	---	---	---	---	---
Kelit HIT K06 Rohre Ø20, d6,0 - Ø63, d32,0, RF2 cr, L1	---	---	---	---	---	---	---
Kelit HIT K06 Rohre Ø63, d32,0 - Ø90, d32,0, RF2 cr, L2	---	---	---	---	---	---	---
Kelit HIT K06 Rohre Ø20, d6,0 - Ø90, d32,0, RF2 cr, L1	---	---	---	---	---	---	---
Kelit KETRIX Tri01 Rohre Ø20, d6,0 - Ø63, d32,0, RF2 cr, L1	---	---	---	---	---	---	---
Kelit KETRIX Tri01 Rohre Ø63, d32,0 - Ø90, d32,0, RF2 cr, L2	---	---	---	---	---	---	---
Kelit KETRIX Tri01 Rohre Ø20, d6,0 - Ø90, d32,0, RF2 cr, L1	---	---	---	---	---	---	---
<b>Stromschienen → Komibschott, Seite 23, Pos. 10</b>							
Canalis KTA 800A - 4000A mit PROMASTOP-CC	EI120	EI120	EI90	EI120	EI90	EI90	EI90



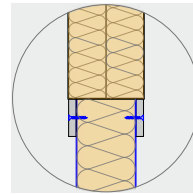
**MBW**  
Massivwand  
≥ 100 mm



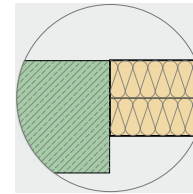
**LBW**  
Leichte Trennwand  
≥ 100 mm



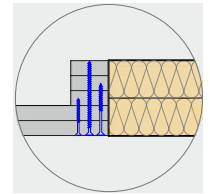
**Schachtwand**  
≥ 2 x 20 mm



**Sandwichpaneel**  
1: Pflaum ≥ 80mm  
2: Bruchaz ≥ 80mm



**MD**  
Massivdecke  
≥ 150 mm



**LBD**  
Abgehängte Decke  
≥ 2 x 20 mm

Einbausituation Zwei-Plattenschott PROMASTOP®-CC 2 x 50 mm	MBW	LBW	Schachtwand	Sandwich 1	Sandwich 2	MD	LBD
Feuerwiderstand Leerabschottung	EI120	EI120	EI90	EI120	EI90	EI120	EI90
Maximale Abschottungsgrösse	3,75m <sup>2</sup>	3,75m <sup>2</sup>	0,60m <sup>2</sup>	2,60m <sup>2</sup>	0,16m <sup>2</sup>	3,75m <sup>2</sup>	0,72m <sup>2</sup>
<b>Kabel mit PROMASTOP®-CC → Komibschott, Seite 5, Pos. 3</b>							
KG1: alle ummantelten Kabel Ø ≤ 21 mm	EI120	EI120	EI90	EI120	EI90	EI120	EI90
KG2: alle ummantelten Kabeltypen 21 ≤ Ø ≤ 50 mm	EI90	EI90	EI90	EI90	EI90	EI90	EI90
KG3: alle ummantelten Kabeltypen 50 ≤ Ø ≤ 80 mm	EI90	EI90	EI90	EI90	EI90	EI90	EI90
KG4: Kabelbündel aus Leitungen der KG1 Ø ≤ 100 mm	EI120	EI120	EI120	EI120	EI120	EI120	EI120
KG5: alle nicht ummantelten Kabel Ø ≤ 24 mm	EI90	EI90	EI90	EI90	EI90	EI90	EI90
KG6: Leerrohr/Rohr St, Cu, Kunststoff, U/C, Ø ≤ 16 mm	EI90	EI90	EI90	EI90	EI90	EI90	EI90
<b>Kabel mit PROMASTOP®-IM CJ21 → Komibschott, Seite 9, Pos. 5</b>							
KG1: alle ummantelten Kabel Ø ≤ 21 mm	EI90	EI90	EI90	EI90	EI90	EI90	EI90
<b>Nichtbrennbare Rohre, nichtbrennbarer Dämmung mit PROMASTOP®-CC → Komibschott, Seite 6 - 8, Pos. 4</b>							
Stahlrohre Ø ≤ 114 mm, s ≤ 14,2 mm	EI90	EI90	EI90	EI90	EI90	EI90	EI90
Stahlrohre Ø ≤ 220 mm, s ≤ 14,2 mm	EI90	EI90	EI90	EI90	EI90	EI90	EI90
Kupferrohre Ø ≤ 88,9 mm, s ≤ 14,2 mm	EI90	EI90	EI90	EI90	EI90	EI90	EI90
<b>Nichtbrennbare Rohre mit brennbarer Dämmung mit PROMASTOP®-W → Komibschott, Seite 22, Pos. 9</b>							
Stahlrohre Ø15 mm, s 9,0 mm - Ø108 mm, s 32,0 mm, L1	EI90	EI90	EI90	EI90	EI90	EI90	EI90
Kupferrohre Ø15 mm, s 9,0 mm - Ø88,9 mm, s 32,0 mm, L1	EI90	EI90	EI90	EI90	EI90	EI90	EI90
<b>Kunststoffrohre (brennbar) ohne Dämmung mit PROMASTOP®-FC → Komibschott, Seite 10 - 15, Pos. 6</b>							
PE-HD, ABS, SAN, PVC Rohre Ø32, s 1,8 - Ø125, s 7,4, FC3	EI120	EI120	EI90	EI120	EI90	EI120	EI90
PE-HD, ABS, SAN, PVC Rohre Ø50, s 1,8 - Ø200, s 11,4, FC6	EI120	EI120	EI90	EI120	EI90	EI120	EI90
PP-H, PP-R Rohre Ø32, s 1,8 - Ø160, s 4,0, FC3	EI120	EI120	EI90	EI120	EI90	EI120	EI90
PP-H, PP-R Rohre Ø50, s 1,8 - Ø200, s 11,4, FC6	EI120	EI120	EI90	EI120	EI90	EI120	EI90
PVC-U, PVC-C Rohre Ø32, s 1,8 - Ø125, s 7,1, FC3	EI120	EI120	EI90	EI120	EI90	EI120	EI90
PVC-U, PVC-C Rohre Ø50, s 1,8 - Ø250, s 4,9, FC6	EI120	EI120	EI90	EI120	EI90	EI120	EI90
Poloplast POLOKAL NG Rohre Ø32, s 1,8 - Ø160, s 4,9, FC3	EI120	EI120	EI90	EI120	EI90	EI120	EI90
Poloplast POLOKAL NG Rohre Ø50, s 2,0 - Ø250, s 8,6, FC6	EI120	EI120	EI90	EI120	EI90	EI120	EI90
Poloplast POLOKAL XS Rohre Ø32, s 1,8 - Ø110, s 3,4, FC3	EI120	EI120	EI90	EI120	EI90	EI120	EI90
Poloplast POLOKAL XS Rohre Ø50, s 2,0 - Ø110, s 3,4, FC6	EI120	EI120	EI90	EI120	EI90	EI120	EI90
Poloplast POLOKAL 3S Rohre Ø75, s 3,8 - Ø160, s 7,5, FC3	EI120	EI120	EI90	EI120	EI90	EI120	EI90
Poloplast POLOKAL 3S Rohre Ø75, s 3,8 - Ø160, s 7,5, FC6	EI120	EI120	EI90	EI120	EI90	EI120	EI90
Poloplast POLO ECO plus Premium 10 Ø110, s 3,9 - Ø250, s 8,5, FC6	EI120	EI120	EI90	EI120	EI90	EI120	EI90
Poloplast POLO ECO plus Prem. 10 Ø315, s 10,8 - Ø400, s 13,6, FC15	EI120	EI120	EI90	EI120	EI90	EI120	EI90
Pipelife Master 3 Rohre Ø32, s 1,8 - Ø125, s 3,5, FC3	EI120	EI120	EI90	EI120	EI90	EI120	EI90
Pipelife Master 3 Rohre Ø50, s 1,8 - Ø160, s 4,4, FC6	EI120	EI120	EI90	EI120	EI90	EI120	EI90
Geberit Silent dB20 Rohre Ø56, s 3,2 - Ø110, s 6,0, FC3	EI120	EI120	EI90	EI120	EI90	EI120	EI90
Geberit Silent dB20 Rohre Ø56, s 3,2 - Ø160, s 7,0, FC6	EI120	EI120	EI90	EI120	EI90	EI120	EI90
Geberit Silent PP Rohre Ø32, s 2,0 - Ø125, s 4,2, FC3	EI120	EI120	EI90	EI120	EI90	EI120	EI90
Geberit Silent PP Rohre Ø32, s 2,0 - Ø160, s 5,2, FC6	EI120	EI120	EI90	EI120	EI90	EI120	EI90
Rehau Baupiano plus Rohre Ø40, s 1,8 - Ø200, s 6,2, FC6	EI120	EI120	EI90	EI120	EI90	EI120	EI90
Nicoll dBlue plus Rohre Ø50, s 1,8 - Ø125, s 3,9, FC3	EI120	EI120	EI90	EI120	EI90	EI120	EI90
Girpi Friaphon Rohre Ø52, s 2,8 - Ø110, s 5,3, FC3	EI120	EI120	EI90	EI120	EI90	EI120	EI90
Girpi Friaphon Rohre Ø52, s 2,8 - Ø160, s 6,3, FC3	EI120	EI120	EI90	EI120	EI90	EI120	EI90
Girpi HTA-E Rohre Ø40, s 3,0 - Ø125, s 6,0, FC6	EI120	EI120	EI90	EI120	EI90	EI120	EI90
KeKelit Phonex AS Rohre Ø58, s 4,0 - Ø160, s 5,3, FC6	EI120	EI120	EI90	EI120	EI90	EI120	EI90
Wavin AS Rohre Ø58, s 4,0 - Ø160, s 5,3, FC6	EI120	EI120	EI90	EI120	EI90	EI120	EI90
Wavin SiTech+ Rohre Ø50, s 1,8 - Ø160, s 4,9, FC3	EI120	EI120	EI90	EI120	EI90	EI120	EI90
Marley Silent Rohre Ø75, s 2,0 - Ø110, s 3,0, FC6	EI120	EI120	EI90	EI120	EI90	EI120	EI90

Fortsetzung:

Einbausituation Zwei-Plattenschott PROMASTOP®-CC 2 x 50 mm	MBW	LBW	Schacht- wand	Sandwich 1	Sandwich 2	MD	LBD
<b>Kunststoffrohre (brennbar) ohne Dämmung mit PROMASTOP®-W → Komibschott, Seite 16 - 17, Pos. 7</b>							
PE-HD, ABS, SAN, PVC Rohre Ø32/2,0 - Ø160/14,6, Ø 32 - 63 L1	EI120	EI120	EI90	EI120	EI90	EI120	EI90
PE-HD, ABS, SAN, PVC Rohre Ø32/2,0 - Ø160/14,6, Ø 64 - 110 L2	EI120	EI120	EI90	EI120	EI90	EI120	EI90
PE-HD, ABS, SAN, PVC Rohre Ø32/2,0 - Ø160/14,6, Ø 111 - 125 L3	EI120	EI120	EI90	EI120	EI90	EI120	EI90
PE-HD, ABS, SAN, PVC Rohre Ø32/2,0 - Ø160/14,6, Ø 126 - 160 L4	EI120	EI120	EI90	EI120	EI90	EI120	EI90
PP-H, PP-R Rohre Ø20/2,8 - Ø160/14,6, Ø 20 - 63 L1	EI90	EI90	EI90	EI90	EI90	EI90	EI90
PP-H, PP-R Rohre Ø20/2,8 - Ø160/14,6, Ø 64 - 110 L2	EI90	EI90	EI90	EI90	EI90	EI90	EI90
PP-H, PP-R Rohre Ø20/2,8 - Ø160/14,6, Ø 111 - 125 L3	EI90	EI90	EI90	EI90	EI90	EI90	EI90
PP-H, PP-R Rohre Ø20/2,8 - Ø160/14,6, Ø 126 - 160 L4	EI90	EI90	EI90	EI90	EI90	EI90	EI90
PP-H, PP-R Rohre Ø32/1,8 - Ø160/14,6, Ø 20 - 63 L1	EI120	EI120	EI90	EI120	EI90	EI120	EI90
PP-H, PP-R Rohre Ø32/1,8 - Ø160/14,6, Ø 64 - 110 L2	EI120	EI120	EI90	EI120	EI90	EI120	EI90
PP-H, PP-R Rohre Ø32/1,8 - Ø160/14,6, Ø 111 - 125 L3	EI120	EI120	EI90	EI120	EI90	EI120	EI90
PP-H, PP-R Rohre Ø32/1,8 - Ø160/14,6, Ø 126 - 160 L4	EI120	EI120	EI90	EI120	EI90	EI120	EI90
PVC-U, PVC-C Rohre Ø32/2,0 - Ø160/14,6, Ø 32 - 63 L1	EI120	EI120	EI90	EI120	EI90	EI120	EI90
PVC-U, PVC-C Rohre Ø32/2,0 - Ø160/14,6, Ø 75 - 110 L2	EI120	EI120	EI90	EI120	EI90	EI120	EI90
PVC-U, PVC-C Rohre Ø32/2,0 - Ø160/14,6, Ø 111 - 125 L3	EI120	EI120	EI90	EI120	EI90	EI120	EI90
PVC-U, PVC-C Rohre Ø32/2,0 - Ø160/14,6, Ø 140 - 160 L4	EI120	EI120	EI90	EI120	EI90	EI120	EI90
Poloplast POLOKAL NG Rohre Ø32/1,8 - Ø160/4,9, Ø 32 - 63 L3	EI90	EI90	EI90	EI90	EI90	EI90	EI90
Poloplast POLOKAL NG Rohre Ø32/1,8 - Ø160/4,9, Ø 75 - 90 L4	EI90	EI90	EI90	EI90	EI90	EI90	EI90
Poloplast POLOKAL NG Rohre Ø32/1,8 - Ø125/3,9, Ø 110 - 125 L5	EI90	EI90	EI90	EI90	EI90	EI90	EI90
Poloplast POLOKAL NG Rohre Ø32/1,8 - Ø125/3,9, Ø 140 - 160 L6	EI90	EI90	EI90	EI90	EI90	EI90	EI90
Poloplast POLOKAL XS Rohre Ø32/1,8 - Ø160/4,9, Ø 32 - 63 L3	EI90	EI90	EI90	EI90	EI90	EI90	EI90
Poloplast POLOKAL XS Rohre Ø32/1,8 - Ø160/4,9, Ø 75 - 90 L4	EI90	EI90	EI90	EI90	EI90	EI90	EI90
Poloplast POLOKAL XS Rohre Ø32/1,8 - Ø160/4,9, Ø 110 - 125 L5	EI90	EI90	EI90	EI90	EI90	EI90	EI90
Poloplast POLOKAL XS Rohre Ø32/1,8 - Ø160/4,9, Ø 140 - 160 L6	EI90	EI90	EI90	EI90	EI90	EI90	EI90
Poloplast POLOKAL 3S Rohre Ø75/3,8 - Ø160/7,5, Ø 75 - 90 L4	EI90	EI90	EI90	EI90	EI90	EI90	EI90
Poloplast POLOKAL 3S Rohre Ø75/3,8 - Ø160/7,5, Ø 110 - 125 L5	EI90	EI90	EI90	EI90	EI90	EI90	EI90
Poloplast POLOKAL 3S Rohre Ø75/3,8 - Ø160/7,5, Ø 140 - 160 L6	EI90	EI90	EI90	EI90	EI90	EI90	EI90
Poloplast POLOKAL 3S Rohre Ø75/3,8 - Ø125/5,3, Ø 75 - 90 L4	EI90	EI90	EI90	EI90	EI90	EI90	EI90
Poloplast POLOKAL 3S Rohre Ø75/3,8 - Ø125/5,3, Ø 110 - 125 L5	EI90	EI90	EI90	EI90	EI90	EI90	EI90
Geberit Silent dB20 Rohre Ø56/3,2 - Ø160/7,0, Ø 16 - 63 L3	EI90	EI90	EI90	EI90	EI90	EI90	EI90
Geberit Silent dB20 Rohre Ø56/3,2 - Ø160/7,0, Ø 75 - 90 L4	EI90	EI90	EI90	EI90	EI90	EI90	EI90
Geberit Silent dB20 Rohre Ø56/3,2 - Ø160/7,0, Ø 110 - 125 L5	EI90	EI90	EI90	EI90	EI90	EI90	EI90
Geberit Silent dB20 Rohre Ø56/3,2 - Ø160/7,0, Ø 140 - 160 L6	EI90	EI90	EI90	EI90	EI90	EI90	EI90
Geberit Silent dB20 Rohre Ø56/3,2 - Ø110/6,0, Ø 16 - 63 L3	EI90	EI90	EI90	EI90	EI90	EI90	EI90
Geberit Silent dB20 Rohre Ø56/3,2 - Ø110/6,0, Ø 75 - 90 L4	EI90	EI90	EI90	EI90	EI90	EI90	EI90
Kelit KETRIX Rohre Ø20/2,8 - Ø160/14,6, Ø 20 - 63 L1	EI90	EI90	EI90	EI90	EI90	EI90	EI90
Kelit KETRIX Rohre Ø20/2,8 - Ø160/14,6, Ø 64 - 110 L2	EI90	EI90	EI90	EI90	EI90	EI90	EI90
Kelit KETRIX Rohre Ø20/2,8 - Ø160/14,6, Ø 111 - 125 L3	EI90	EI90	EI90	EI90	EI90	EI90	EI90
Kelit KETRIX Rohre Ø20/2,8 - Ø160/14,6, Ø 126 - 160 L4	EI90	EI90	EI90	EI90	EI90	EI90	EI90
PE-X Rohre Ø16/2,2 - Ø63/8,6, Ø 16 - 63 L1	EI90	EI90	EI90	EI90	EI90	EI90	EI90
<b>Kunststoffrohre (bb) mit brennbarer Dämmung mit PROMASTOP®-W → Komibschott, Seite 16 - 18, Pos. 7</b>							
PP-H, PP-R Rohre Ø20, d6 - Ø110 d32,0, RF2 cr, Ø 20 - 63 L1	EI90	EI90	EI90	EI90	EI90	EI90	EI90
PP-H, PP-R Rohre Ø20, d6 - Ø110 d32,0, RF2 cr, Ø 64 - 110 L2	EI90	EI90	EI90	EI90	EI90	EI90	EI90
PP-H, PP-R Rohre Ø20, d4 - Ø32 d13,0, RF3 cr, Ø 20 - 63 L1	EI90	EI90	EI90	EI90	EI90	EI120	EI90
Kelit KETRIX Rohre Ø20, d6,0 - Ø160, d32,0, RF2 cr, Ø 20 - 63 L1	EI90	EI90	EI90	EI90	EI90	EI120	EI90
Kelit KETRIX Rohre Ø20, d6,0 - Ø160, d32,0, RF2 cr, Ø 64 - 110 L2	EI90	EI90	EI90	EI90	EI90	EI120	EI90
Kelit KETRIX Rohre Ø20, d6,0 - Ø160, d32,0, RF2 cr, Ø 111 - 125 L3	EI90	EI90	EI90	EI90	EI90	EI120	EI90
Kelit KETRIX Rohre Ø20, d6,0 - Ø160, d32,0, RF2 cr, Ø 126 - 160 L4	EI90	EI90	EI90	EI90	EI90	EI120	EI90
PE-X Rohre Ø16, d6,0 - Ø63, d32,0, RF2 cr, Ø 16 - 63 L1	EI120	EI120	EI90	EI120	EI90	EI90	EI90
PE-X Rohre Ø16, d6,0 - Ø63, d32,0, RF3 cr, Ø 16 - 63 L1	EI120	EI120	EI90	EI120	EI90	EI120	EI90
<b>Alu-Verbundrohre mit brennbarer Dämmung mit PROMASTOP®-W → Komibschott, Seite 19 - 21, Pos. 8</b>							
Geberit MePla Rohre Ø16, d6,0 - Ø75 d32,0, RF2 cr, L1	EI90	EI90	EI90	EI90	EI90	EI90	EI90
Geberit MePla Rohre Ø16, d4,0 - Ø75 d13,0, RF3 cr, L1	EI90	EI90	EI90	EI90	EI90	EI120	EI90
Geberit PushFit Rohre Ø16, d6,0 - Ø25 d32,0, RF2 cr, L1	EI120	EI120	EI90	EI120	EI90	EI120	EI90
Pipelife Radopress Rohre Ø16, d6,0 - Ø63 d32,0, RF2 cr, L1	EI120	EI120	EI90	EI120	EI90	EI120	EI90
Pipelife Radopress Rohre Ø16, d4,0 - Ø32 d9,0, RF3 cr, L1	EI120	EI120	EI90	EI120	EI90	EI120	EI90
Rehau Rautitan stabil Rohre Ø16,2, d6,0 - Ø40 d32,0, RF2 cr, L1	EI120	EI120	EI90	EI120	EI90	EI90	EI90
Rehau Rautitan stabil Rohre Ø16,2, d4,0 - Ø25 d13,0, RF3 cr, L1	EI90	EI90	EI90	EI90	EI90	EI90	EI90
Viega Raxofix / Sanfix Rohre Ø16, d6,0 - Ø63 d32,0, RF2 cr, L1	EI120	EI120	EI90	EI120	EI90	---	---
Viega Raxofix / Sanfix Rohre Ø20, d6,0 - Ø65 d32,0, RF2 cr, L1	---	---	---	---	---	EI90	EI90
Viega Raxinox Rohre Ø16, d4,0 - Ø20 d25,0, RF3 cr, L1	---	---	---	---	---	EI120	EI90
Uponor MLC pipe Rohre Ø14, d6,0 - Ø75 d32,0, RF2 cr, L1	EI90	EI90	EI90	EI90	EI90	EI90	EI90
Uponor MLC pipe Rohre Ø16, d4,0 - Ø25 d13,0, RF3 cr, L1	EI90	EI90	EI90	EI90	EI90	EI90	EI90
Uponor UNI pipe Rohre Ø16, d6,0 - Ø32 d32,0, RF2 cr, L1	EI90	EI90	EI90	EI90	EI90	EI90	EI90
Uponor UNI pipe Rohre Ø16, d4,0 - Ø25 d10,0, RF3 cr, L1	EI90	EI90	EI90	EI90	EI90	EI120	EI90
Kelit KELOX Rohre Ø14, d6,0 - Ø75, d32,0, RF2 cr, L1	EI90	EI90	EI90	EI90	EI90	EI90	EI90
Kelit KELOX Rohre Ø14, d4,0 - Ø32, d13,0, RF3 cr, L1	EI90	EI90	EI90	EI90	EI90	EI120	EI90
Kelit HIT K06 Rohre Ø20, d6,0 - Ø63, d32,0, RF2 cr, L1	EI90	EI90	EI90	EI90	EI90	---	---
Kelit HIT K06 Rohre Ø63, d32,0 - Ø90, d32,0, RF2 cr, L2	EI90	EI90	EI90	EI90	EI90	---	---
Kelit HIT K06 Rohre Ø20, d6,0 - Ø90, d32,0, RF2 cr, L1	---	---	---	---	---	EI90	EI90
Kelit KETRIX Tri01 Rohre Ø20, d6,0 - Ø63, d32,0, RF2 cr, L1	EI90	EI90	EI90	EI90	EI90	---	---
Kelit KETRIX Tri01 Rohre Ø63, d32,0 - Ø90, d32,0, RF2 cr, L2	EI90	EI90	EI90	EI90	EI90	---	---
Kelit KETRIX Tri01 Rohre Ø20, d6,0 - Ø90, d32,0, RF2 cr, L1	---	---	---	---	---	EI120	EI90
<b>Stromschienen → Komibschott, Seite 23, Pos. 10</b>							
Canalis KTA 800A - 4000A mit PROMASTOP-CC	EI120	EI120	EI90	EI120	EI90	EI90	EI90



## Ihre Ansprechpartner

AG, BE, BL, BS, SO, VS



**Beat Spielhofer**  
Tel. +41 79 670 90 98  
spielhofer@promat.ch

SH, ZH

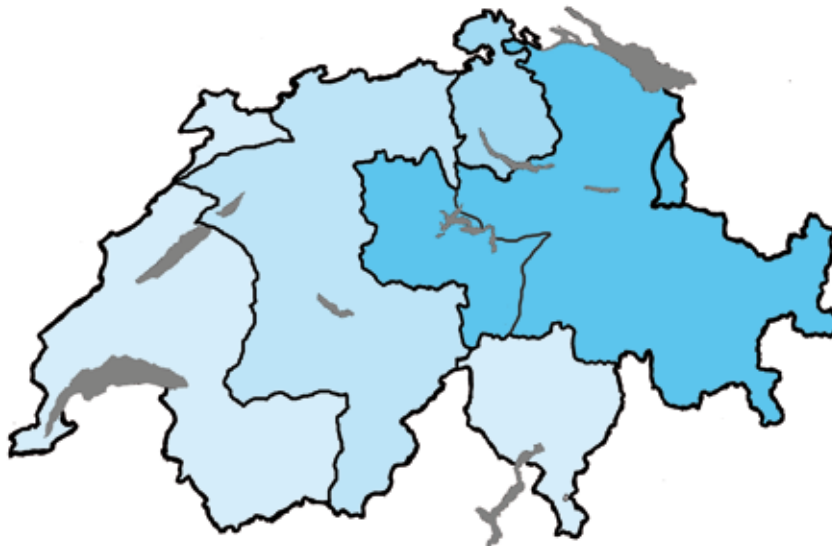


**Franz Wendel**  
Tel. +41 79 671 85 79  
wendel@promat.ch

SH, ZH



**Marco Schirle**  
Tel. +41 79 958 63 88  
schirle@promat.ch



FR, GE, JU, NE, VD, VS, TI



**Frank Feller**  
Tel. +41 79 887 04 65  
feller@promat.ch

AI, AR, GL, GR, LU, NW, OW,  
SG, SZ, TG, UR, ZG, FL



**Thomas Raimann**  
Tel. +41 79 368 62 91  
raimann@promat.ch

Hauptsitz  
Promat AG  
Industriestrasse 3  
9542 Münchwilen  
Tel. 052 320 94 00  
FAX 052 320 94 02  
office@promat.ch

