
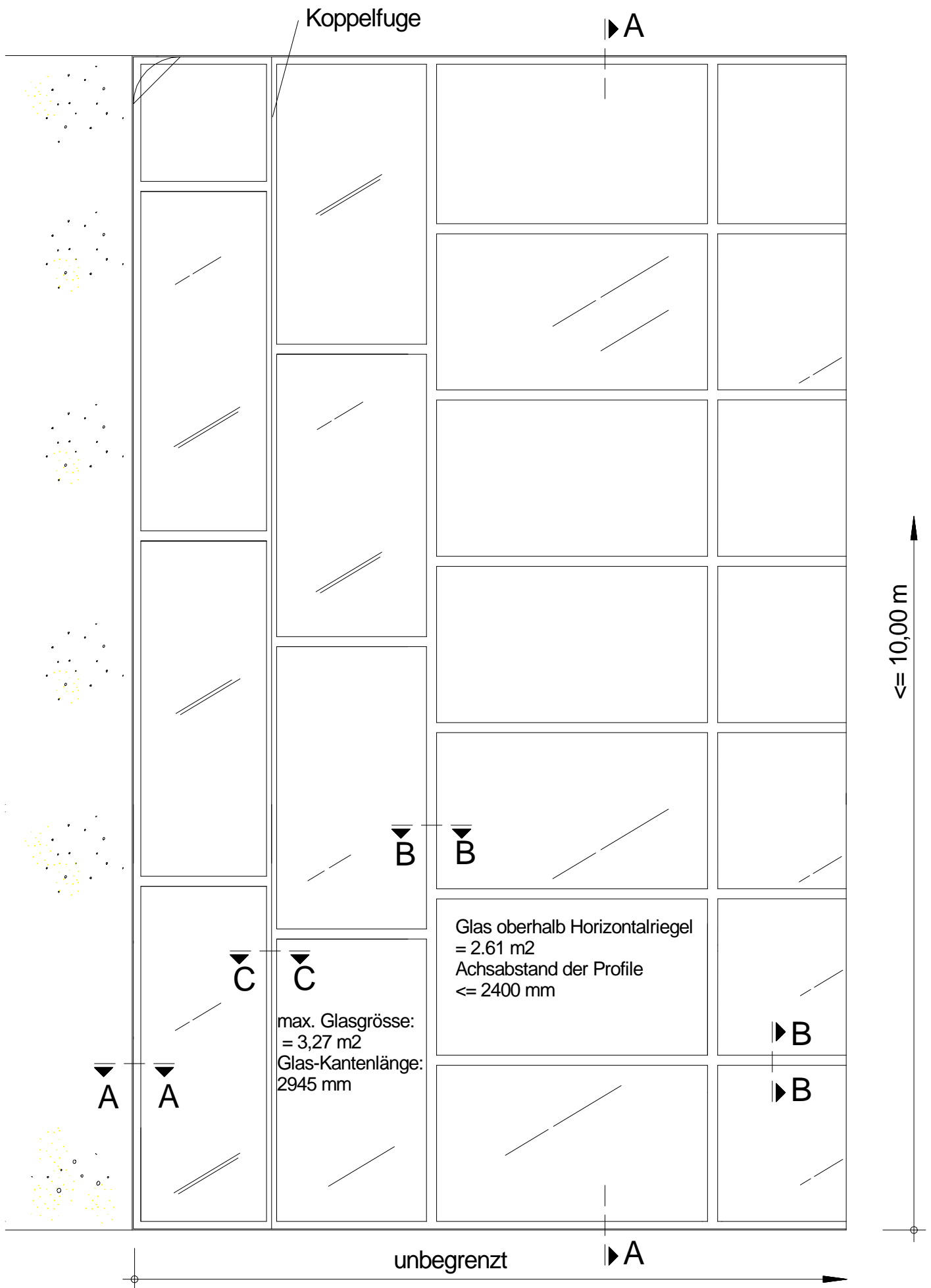
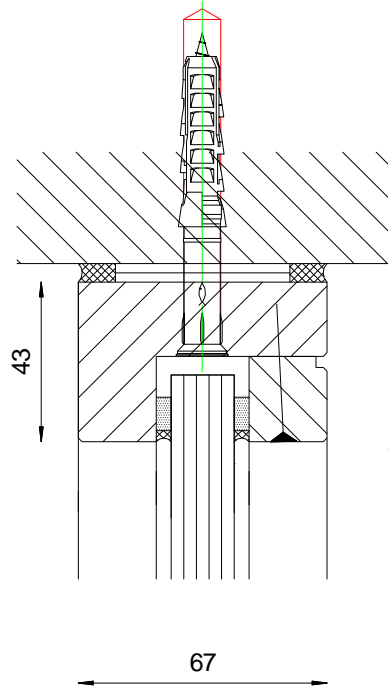


|   |   |               |             |
|---|---|---------------|-------------|
| Objekt:   | Glaswand EI30, Konstr. 485.10   | Konstruktion: | Ansicht 1   |
| <b>Promat AG</b><br><b>Stationsstrasse 1</b><br><b>8545 Rickenbach Sulz</b> |  | Masstab:      | 1:1         |
|   |   | Gezeichnet:   | Reto Walker |
|   |   | Datum:        | 27.09.2013  |

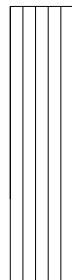


|   |                               |               |             |
|---|-------------------------------|---------------|-------------|
| Objekt:   | Glaswand EI30, Konstr. 485.10 | Konstruktion: | Ansicht 2   |
| <b>Promat AG</b><br><b>Stationsstrasse 1</b><br><b>8545 Rickenbach Sulz</b> |                               | Masstab:      | 1:1         |
|   |                               | Gezeichnet:   | Reto Walker |
|   |                               | Datum:        | 27.09.2013  |



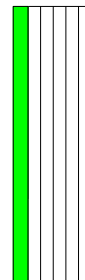
Schnitt A-A

Glastypen



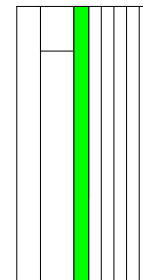
17

Promaglas, Typ 1-0  
ohne UV-Schutz



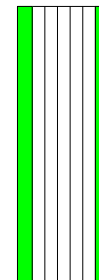
21

Promaglas, Typ 2-0  
UV-Schutz einseitig



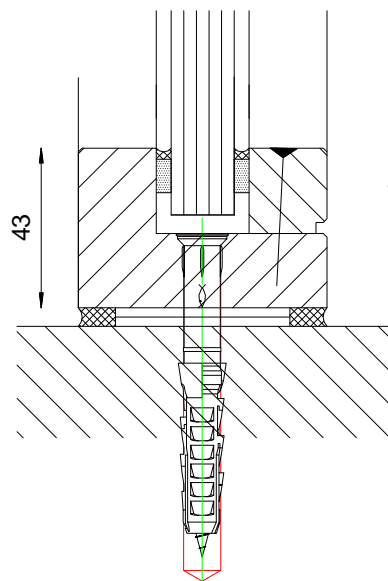
$\geq 36$  mm

Promaglas, Typ 3-0  
Isolierglas  
Anforderung bestimmt  
die Glasdicke




25

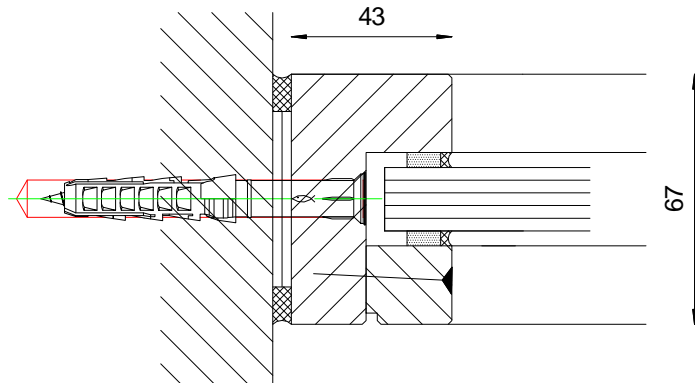
Promaglas, Typ 10-0  
UV-Schutz beidseitig



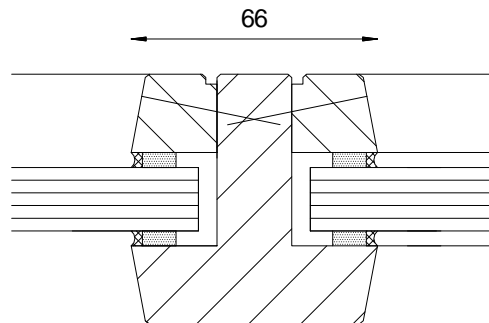
Schnitt A-A

|   |   |               |                     |
|---|---|---------------|---------------------|
| Objekt:   | Glaswand EI30, Konstr. 485.10   | Konstruktion: | Vertikalschnitt A-A |
| <b>Promat AG</b><br><b>Stationsstrasse 1</b><br><b>8545 Rickenbach Sulz</b> |  | Masstab:      | 1:1                 |
|   |   | Gezeichnet:   | Reto Walker         |
|   |   | Datum:        | 27.09.2013          |

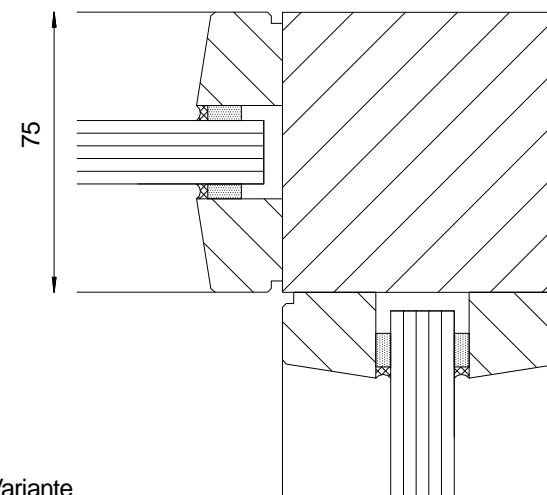
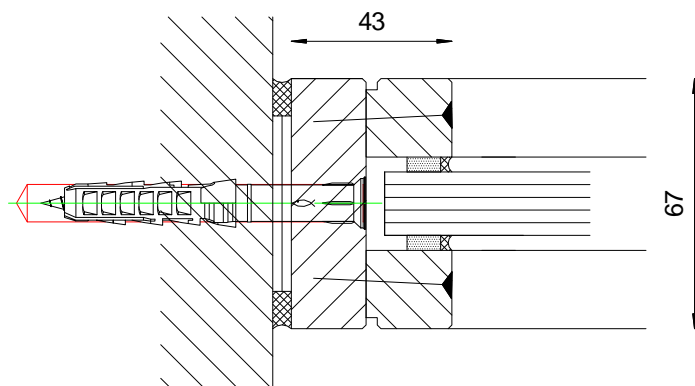
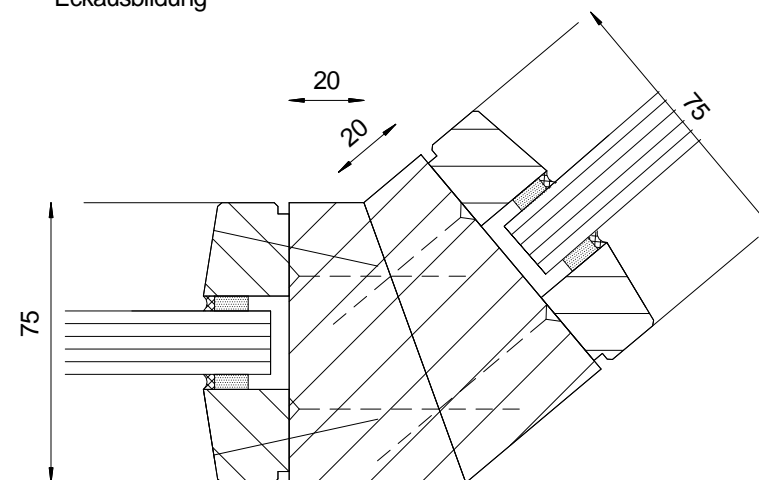
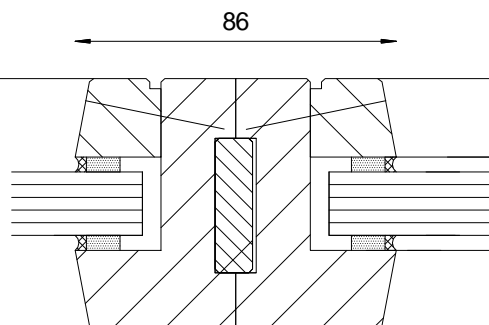
Schnitt A-A



Schnitt B-B



Eckausbildung

Variante  
EckausbildungAlternativ  
Schnitt A-AAlternativ  
Schnitt B-B

Objekt:

Glaswand EI30, Konstr. 485.10

Konstruktion:

Horizontalschnitt A-A, B-B

Promat AG  
Stationsstrasse 1  
8545 Rickenbach Sulz

**Promat**

Masstab:

1:1

Gezeichnet:

Reto Walker

Datum:

27.09.2013